



OpenCPN, selon Shoreline

[Plan du site](#) ---> [Dossiers techniques](#) ---> Le dossier d'initialisation ---> Le fichier log

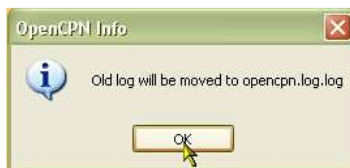
DT_43 Le fichier log

Validité : Toutes versions

 [Version pdf imprimable](#)

Rôle :

- Ce fichier s'appelle opencpn.log
- Il est créé à la première utilisation d'OpenCPN.
- Il est ouvert à nouveau à chaque autre utilisation du logiciel.
- S'il est trop "gros", il est renommé opencpn.log.log



Traduction : Ancien fichier log renommé "opencpn.log.log"

[Up](#)

- et un autre fichier log est créé.
- Toutes les actions, mises en oeuvre durant le fonctionnement du logiciel, y sont consignées.
- Il permet donc de comprendre toute anomalie de fonctionnement du logiciel.

Exemple de contenu :

Pour cet exemple :

[Up](#)

- La précédente version du fichier log a été supprimée de façon qu'un nouveau fichier log soit créé.
- OpenCPN a été ouvert et fermé immédiatement.

15:54:23:

```

15:54:23: 2012-06-15
15:54:23: -----Starting opencpn-----
15:54:23: Version 3.0.0 Build 2012-06-03
15:54:23: MemoryStatus: mem_total: 1015 mb, mem_initial: 9 mb
15:54:23: SData_Locn is C:\Program Files\OpenCPN\
15:54:24: Error: Image file is not of type 9.
15:54:24: Error: Image file is not of type 9.
15:54:24: Using existing Config_File: C:\Documents and Settings\All Users\Application Data\opencpn\opencpn.ini
15:54:24: Setting Viewpoint Lat/Lon 49.4559, -2.5275
15:54:24: Setting Ownship Lat/Lon 49.4581, -2.5086
15:54:24: System default Language: fr_FR
15:54:24: Opencpn language set to: fr_FR
15:54:24: ChartSymbols loaded from C:\Program Files\OpenCPN\s57data\chartsymbols.xml
15:54:25: Using s57data in C:\Program Files\OpenCPN\s57data
15:54:25: Setting Viewpoint Lat/Lon 49.4559, -2.5275
15:54:25: Setting Ownship Lat/Lon 49.4581, -2.5086
15:54:25: NMEA Data Source is.....Serial:AIS Port (Shared)
15:54:25: AIS Data Source is.....None
15:54:25: Using WVSCart datafile: C:\Program Files\OpenCPN\wvswdata\wvs43.dat
15:54:25: NMEA AutoPilot Port is.....None
15:54:25: PluginManager searching for Plugins in location C:\Program Files\OpenCPN\plugins
15:54:25: PluginManager: Loading Plugin: C:\Program Files\OpenCPN\plugins\aisradar_pi18_v092_pi.dll
15:54:25: C:\Program Files\OpenCPN\plugins\aisradar_pi18_v092_pi.dll Version detected: 108
15:54:25: PluginManager: Loading Plugin: C:\Program Files\OpenCPN\plugins\bsb4_win32_pi15_v12_pi.dll
15:54:25: C:\Program Files\OpenCPN\plugins\bsb4_win32_pi15_v12_pi.dll Version detected: 105
15:54:25: PluginManager: Loading Plugin: C:\Program Files\OpenCPN\plugins\dashboard_pi.dll
15:54:25: C:\Program Files\OpenCPN\plugins\dashboard_pi.dll Version detected: 106
15:54:26: PluginManager: Loading Plugin: C:\Program Files\OpenCPN\plugins\findit_pi.dll
15:54:26: C:\Program Files\OpenCPN\plugins\findit_pi.dll Version detected: 106
15:54:26: PluginManager: Loading Plugin: C:\Program Files\OpenCPN\plugins\gecomapi_win32_pi16_v09_pi.dll

```

[Up](#)

[Up](#)

15:54:26: C:\Program Files\OpenCPN\plugins\gecomapi_win32_pi16_v09_pi.dll Version detected: 106
15:54:26: [GECOMAPI] Config params loaded: WW=1, ASH=1, DGA=1, USG=1, SB=0, WF=3, Az=0, Ti=0, Ra=215948, Opa=177
15:54:26: [GECOMAPI] Constructing the GE plugin window
15:54:26: [GECOMAPI] GE plugin - OnSize event
15:54:26: [GECOMAPI] GE resize requested
15:54:26: [GECOMAPI] GE plugin - OnShow event
15:54:26: [GECOMAPI] GE plugin - OnShow event
15:54:26: [GECOMAPI] GE plugin - OnSize event
15:54:26: [GECOMAPI] GE resize requested
15:54:26: [GECOMAPI] GE plugin - OnSize event
15:54:26: [GECOMAPI] GE resize requested
15:54:26: [GECOMAPI] GE plugin - OnSize event
15:54:26: [GECOMAPI] GE resize requested
15:54:26: PluginManager: Loading PlugIn: C:\Program Files\OpenCPN\plugins\grib_pi.dll
15:54:26: C:\Program Files\OpenCPN\plugins\grib_pi.dll Version detected: 107
15:54:26: PluginManager: Loading PlugIn: C:\Program Files\OpenCPN\plugins\kmloverlay-test_pi.dll
15:54:26: C:\Program Files\OpenCPN\plugins\kmloverlay-test_pi.dll Version detected: 107
15:54:26: PluginManager: Loading PlugIn: C:\Program Files\OpenCPN\plugins\logbookkonni_pi.dll
15:54:26: C:\Program Files\OpenCPN\plugins\logbookkonni_pi.dll Version detected: 106
15:54:26: PluginManager: Loading PlugIn: C:\Program Files\OpenCPN\plugins\nvc_win32_pi15_v13_pi.dll
15:54:26: C:\Program Files\OpenCPN\plugins\nvc_win32_pi15_v13_pi.dll Version detected: 105
15:54:26: PluginManager: Loading PlugIn: C:\Program Files\OpenCPN\plugins\ocpndebugger_win32_pi18_v01_pi.dll
15:54:26: C:\Program Files\OpenCPN\plugins\ocpndebugger_win32_pi18_v01_pi.dll Version detected: 108
15:54:26: PluginManager: Loading PlugIn: C:\Program Files\OpenCPN\plugins\survey_v01_pi17_pi.dll
15:54:26: C:\Program Files\OpenCPN\plugins\survey_v01_pi17_pi.dll Version detected: 107
15:54:26: PluginManager: Loading PlugIn: C:\Program Files\OpenCPN\plugins\vdr_win32_pi16_v03_pi.dll
15:54:26: C:\Program Files\OpenCPN\plugins\vdr_win32_pi16_v03_pi.dll Version detected: 106
15:54:26: PluginManager: Loading PlugIn: C:\Program Files\OpenCPN\plugins\wmm_win32_pi18_v06_pi.dll
15:54:26: C:\Program Files\OpenCPN\plugins\wmm_win32_pi18_v06_pi.dll Version detected: 108
15:54:26: Warning: WMM model data file C:\Program Files\OpenCPN\plugins\WMM.COF can't be loaded, using the bundled data.
15:54:26: OpenGL-> Renderer String: Intel 945GM
15:54:26: OpenGL-> Detected Intel renderer, disabling stencil buffer
15:54:26: OpenGL-> Framebuffer Objects unavailable
15:54:26: OpenGL-> Using Depth buffer clipping
15:54:26: OpenGL-> Estimated Max Resident Textures: 98
15:54:26: [GECOMAPI] GE plugin - OnSize event
15:54:26: [GECOMAPI] GE resize requested
15:54:26: [GECOMAPI] GE plugin - OnShow event
15:54:26: [GECOMAPI] GE plugin - OnShow event
15:54:26: [GECOMAPI] GE plugin - OnShow event
15:54:26: ChartDB Cache policy: Application target is 507 MBytes
15:54:26: Loading chart db version: V016
15:54:26: Chartdb: Chart directory list follows
15:54:26: Chart directory #0: C:\Cartographie\BSB_Argentine
15:54:26: Chart directory #1: C:\Cartographie\BSB_Bresil
15:54:26: Chart directory #2: C:\Cartographie\ENC_Colombie
15:54:26: Chart directory #3: C:\Cartographie\ENC_Mexique
15:54:26: Chart directory #4: C:\Cartographie\ENC_USA
15:54:26: Chart directory #5: C:\Cartes_protegees\CM93\CM93_Mai_2009
15:54:26: GPS Watchdog Timeout is: 6 sec.
15:54:26: Initializing Chart C:\Cartes_protegees\CM93\CM93_Mai_2009
15:54:26: CM93Composite Chart Root is C:\Cartes_protegees\CM93\CM93_Mai_2009\
15:54:26: Loaded CM93 Dictionary from C:\Cartes_protegees\CM93\CM93_Mai_2009\
15:54:26: Loading CM93 cell C:\Cartes_protegees\CM93\CM93_Mai_2009\03901020/E/04181072.E
15:54:27: Getting .gpx layer files from: C:\Documents and Settings\All Users\Application Data\opencpn\layers
15:54:27: New layer 1: French_Atlantic_fcst
15:54:27: New layer 2: Route_couche_Lemmer_Lelysstadt
15:54:27: New layer 3: Route_couche_Lemmer_Lelysstadt_2
15:54:27: New layer 4: Route_couche_Lemmer_Lelysstadt_3
15:54:27: [GECOMAPI] SetCurrentViewPort called by OpenCPN
15:54:27: [GECOMAPI] Following the viewport to Lat=49.455900, Lon=-2.527500, H=0.023892, W=0.075281, R=-0.000000 requested
15:54:27: [GECOMAPI] Not detaching, asked to catch up
15:54:27: [GECOMAPI] Rotation translated to 0.000000 degrees
15:54:33: PluginManager: Deactivating PlugIn: C:\Program Files\OpenCPN\plugins\aisradar_pi18_v092_pi.dll
15:54:33: PluginManager: Deactivating PlugIn: C:\Program Files\OpenCPN\plugins\bsb4_win32_pi15_v12_pi.dll
15:54:33: PluginManager: Deactivating PlugIn: C:\Program Files\OpenCPN\plugins\dashboard_pi.dll
15:54:33: PluginManager: Deactivating PlugIn: C:\Program Files\OpenCPN\plugins\findit_pi.dll
15:54:33: PluginManager: Deactivating PlugIn: C:\Program Files\OpenCPN\plugins\gecomapi_win32_pi16_v09_pi.dll
15:54:33: [GECOMAPI] Destroying the GE plugin window
15:54:33: [GECOMAPI] Going to close GE
15:54:33: [GECOMAPI] Closing GE requested
15:54:33: [GECOMAPI] Config params saved: WW=1, ASH=1, DGA=1, USG=1, SB=0, WF=3, Az=0, Ti=0, Ra=215948, Opa=177
15:54:33: PluginManager: Deactivating PlugIn: C:\Program Files\OpenCPN\plugins\grib_pi.dll
15:54:33: PluginManager: Deactivating PlugIn: C:\Program Files\OpenCPN\plugins\kmloverlay-test_pi.dll
15:54:33: PluginManager: Deactivating PlugIn: C:\Program Files\OpenCPN\plugins\logbookkonni_pi.dll
15:54:33: PluginManager: Deactivating PlugIn: C:\Program Files\OpenCPN\plugins\nvc_win32_pi15_v13_pi.dll

[Up](#)[Up](#)[Up](#)[Up](#)[Up](#)

15:54:33: PluginManager: Deactivating PlugIn: C:\Program Files\OpenCPN\plugins/ocpndebugger_win32_pi18_v01_pi.dll
15:54:33: PluginManager: Deactivating PlugIn: C:\Program Files\OpenCPN\plugins/survey_v01_pi17_pi.dll
15:54:33: PluginManager: Deactivating PlugIn: C:\Program Files\OpenCPN\plugins/vdr_win32_pi16_v03_pi.dll
15:54:33: PluginManager: Deactivating PlugIn: C:\Program Files\OpenCPN\plugins/wmm_win32_pi18_v06_pi.dll
15:54:33: opencpn::MyFrame exiting cleanly.
15:54:33: Chart cache purge
15:54:33: PluginManager: UnLoading PlugIn: C:\Program Files\OpenCPN\plugins/aisradar_pi18_v092_pi.dll
15:54:33: PluginManager: UnLoading PlugIn: C:\Program Files\OpenCPN\plugins/bsb4_win32_pi15_v12_pi.dll
15:54:33: PluginManager: UnLoading PlugIn: C:\Program Files\OpenCPN\plugins/dashboard_pi.dll
15:54:33: PluginManager: UnLoading PlugIn: C:\Program Files\OpenCPN\plugins/findit_pi.dll
15:54:33: PluginManager: UnLoading PlugIn: C:\Program Files\OpenCPN\plugins/gecomapi_win32_pi16_v09_pi.dll
15:54:33: PluginManager: UnLoading PlugIn: C:\Program Files\OpenCPN\plugins/grib_pi.dll
15:54:33: PluginManager: UnLoading PlugIn: C:\Program Files\OpenCPN\plugins/kmlovelay-test_pi.dll
15:54:33: PluginManager: UnLoading PlugIn: C:\Program Files\OpenCPN\plugins/logbookkonni_pi.dll
15:54:33: PluginManager: UnLoading PlugIn: C:\Program Files\OpenCPN\plugins/nvc_win32_pi15_v13_pi.dll
15:54:33: PluginManager: UnLoading PlugIn: C:\Program Files\OpenCPN\plugins/ocpndebugger_win32_pi18_v01_pi.dll
15:54:33: PluginManager: UnLoading PlugIn: C:\Program Files\OpenCPN\plugins/survey_v01_pi17_pi.dll
15:54:33: PluginManager: UnLoading PlugIn: C:\Program Files\OpenCPN\plugins/vdr_win32_pi16_v03_pi.dll
15:54:33: PluginManager: UnLoading PlugIn: C:\Program Files\OpenCPN\plugins/wmm_win32_pi18_v06_pi.dll
15:54:33: Chart cache purge
15:54:33: LOGBOOK: 2012-06-15 13:54:33 UTC OFF: Lat 49.45810 Lon -2.50860
15:54:33: opencpn::MyApp exiting cleanly...

[Aller au plan du site](#)

[Haut de page](#)

Copyright : Ce site web est protégé contre toute utilisation commerciale.
Dernière modification de cette page : 15/01/2013